

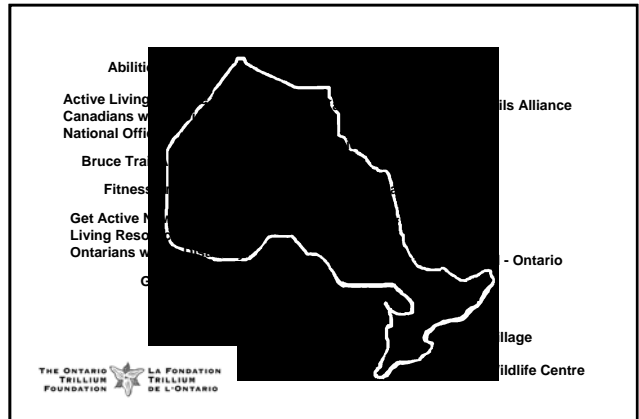
Ontario's Best Trails

Ontario's Best Trails



Guidelines and Best Practices for Design, Construction & Maintenance

Trails for All Ontarians Collaborative



Three Key Points

- Trail accessibility is essential
- Universal design achieves accessibility
- Sustainability achieves universal design

Accessibility is Essential

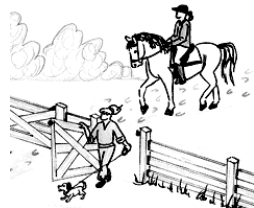
Open for use
Able to be reached
(Webster's dictionary)



NOT everyone, everywhere
But a place for everyone, somewhere

Understand All Users

Different interests
Different abilities
Different experiences



and wildlife

Universal Design = Access

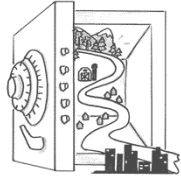
Design philosophy that attempts to meet the needs of the widest range of potential users



Scarce resources are used for the greatest benefit

Ontario's Best Trails

Sustainable Design



Choices that simultaneously enhance the wellbeing of both people and ecosystems without unbearable burdens -- environmental, economic, or social -- on future generations.

Adapted from Peck, S. Sustainable Communities for a Sustainable Planet

Guidelines for Trail Design



The ideal trail is . . .
Seamless with the outdoor environment

D. Beers & K. Knapp, 2006

Understand the Trail

Design from an in-depth understanding of the natural environment

Balance demands of conservation, recreation, and transportation

Preserve and protect the natural environment

Trail Layout

Curvilinear/contour design layout

Maintain natural sheet drainage patterns



Guidelines for Construction



Focus on sustainability

Minimize environmental impact

Follow construction log from designer

Rehabilitation immediately and completely

Construction Best Practices



Minimize soil erosion and compaction adjacent to trail

Train workers to minimize damage

Contain and remove all debris

Ontario's Best Trails

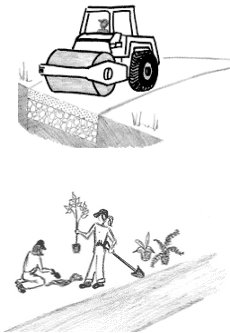
Trail Surface

Choose a sustainable soil or material
 Prepare the ground
 Cut the bench - outslope
 Install and compact the tread material



Trail Surface

Install and compact the tread material
 Restore the environment



Guidelines for Maintenance

Planning maintenance activities
 Maintaining drainage
 Maintaining trail tread
 Maintaining trail structures / facilities
 Restoring the trail environment



Maintenance Best Practices

Maintain outslope
 Ensure drainage structure function
 Replace / repair structures moved by flood



Don't fight the beavers!



If you can't do it . . .



Photo credit: Patti Longmuir

Tell people !!!

BELFOUNTAIN TRAIL					
ONTARIO METROPOLITAN TORONTO					
General Information	Trail Details	Sites Services	Trail Contacts	Trail Location	
measurements	width	grad	Xslope	elevation	
	min. 0.01 m	10.00 %	4.3 %	m NA	
	max. 1.25 m	93.00 %	29.5 %	m NA	
map reference	[040P16 43 48 N 80 01 W]				
environments	Rural				
surfaces	soil, compacted_wood, boardwalk_soil				
trail uses	dog_walking_hiking_snow_shoeing_walking				
prohibited trail uses	not specified				
seasons	Jan - Dec / All year				

W.E. Bill Sauer Nature Trail North 0.6 mi.

- Hikers No Bikes
- Grade Typical 4%
21% of the trail is greater than 5%
- Cross Slope Typical 1%
21% of the trail is greater than 2%
- Tread Width Typical 59 in
Minimum 58 in
- Surface Type Aggregate/Gravel
- 3 in. Rocks 3 in. Roots

Ontario's Best Trails

Ensure Your
Park or Trail



Photo credit: Don Beers



Photo credit: Patti Longmuir

Provides
the Best
Experience . . .

for Everyone !!



Photo credit: Karl Knapp

Three Key Points

-  Trail accessibility is essential
-  Universal design achieves accessibility
-  Sustainability achieves universal design

